



REHEKURI WILD LIFE SANCTUARY- A REVIEW

Minakshi Mahajan¹ and Rajendra Patil²

^{1.} Fergusson College, Pune-4

^{2.} Amolakchand Mahavidyalaya Yawatmal

ABSTRACT

Rehekuri wild life sanctuary is protected area in Ahmednagar district. The area of sanctuary is 2.17 square km It is a semi-arid region The type of forest is deciduous scrub forest. The forest is characterized by thorny trees with short trunks and low branching crowns. The wild life sanctuary is famous for Blackbuck (*Antilope cervicapa* L.). This animal is endemic to Indian subcontinent. We have visited many time this sanctuary and observed flora and fauna.

INTRODUCTION

At National and International level more emphasis is given on to conservation of Biodiversity. Ever changing in climatic conditions leads to mass extinction of biodiversity. The reasons accounts for loss of biodiversity are anthropogenic activities of man; as a result there is loss of habitat and forest fragmentation. The National Wildlife Action Plan (1982) of government of India addresses the need to conserving nation's biodiversity. Rehekuri wild life sanctuary is mainly working on conservation of blackbuck. The sanctuary is often referred as Blackbuck Sanctuary. Blackbucks are found in three wild life sanctuaries from India. Rehekuri is one of them. Blackbucks are endangered animals.

MATERIAL AND METHODS-

We have visited rehekuri wild life sanctuary. Rehekuri is located approximately 120 kms from Pune. . It is in Ahmednagar district. The sanctuary spread across 3-4 kms. Observed flora and fauna.

RESULT AND DISCUSSION-

Around 300 blackbucks are present in the Sanctuary. Blackbucks belong to the family Bovidae of the order Artidactyla. It is endemic to Indian subcontinent. They are also known as the Indian antelope, is an antelope found in India, Nepal and Pakistan. Several workers made their contribution on general habits, distribution, status and behaviour of blackbuck. (Lydekker (1907), Spillett (1966), Prater (1973), Schaller (1967), Cary (1976), Mungall (1978), Prasad (1983-86), Ranjitsinghji (1982 & 1989), Chattopadhyay & Bhattacharya (1985 & 1986), Isvaran (2000, 2003 & 2005)

REFERENCES

- Cary, E.R. 1976. Territorial and reproductive behaviour of the blackbuck antelope (*Antilope cervicapa*). Unpublished Ph. D. dissertation. Texas A & M Univ. College Station, Tex. 220 pp.
- Chatopadhyay , B.W. and Bhattacharya, T. 1986b. Food habits of blackbuck (*Antilope cervicapa*) of Ballavpur Wildlife Sanctuary, West Bengal, India. *Trop. Ecol.*, 27 : 93-100.
- Chattopadhyay , B.W. and Bhattacharya, T. 1985. Population dynamics of blackbuck (*Antilope cervicapa* L.) of Ballavpur Wildlife Sanctuary, West Bengal. *Indian Forester*, 112 : 849-869.
- Chattopadhyay, B.N. and Bhattacharya, T. 1986a. Basic Diurnal Pattern of Blackbuck of Ballavpur Wildlife Sanctuary, and its seasonal variation. *J. Bomb. Nat. Hist. Soc.*, 83(3) : 553-561.
- Isvaran, K. 2003. The evolution of lekking: Insight from a species with a flexible mating system. Ph. D. Dissertation, University of Florida, Gainesville.
- Isvaran, K. 2005a. Female grouping best predicts lekking in blackbuck (*Antilope cervicapa*). *Behavioral Ecology and Sociobiology*, 57(3) : 283-294.
- Isvaran, K. 2005b. Variation in male mating behaviour within ungulate populations: pattern and processes. *Current Science*, 89(7) : 1192-1199.
- Isvaran, K. and Jhala, Y.V. 2000. Lekking costs in blackbuck: relationship to lek-territory position and female mating patterns. *Behaviour*, 137 : 547-563.

Lydekker, R. 1924. The game animals of India, Burma, Malaya and Tibet. London, Rowland Ward, 416 pp., 2nd ed.

Mahato, A.K. Roy, Ramakrishna and Raziuddin, M., 2010. Status, Ecology & Behaviour of Antelope cervicapra (Linnaeus, 1758) in Proposed Community Reserve for Blackbuck, Ganjam District, Orissa, India. 1-160, (Published by the Director, Zool. Surv. India, Kolkata)

Mungall, E.C., 1978b. Social development of the young blackbuck antelope (*Antelope cervicapra*) AAZPA Regional workshop proceedings 1977-1978, Hills, Topeka, KS pp 153-170.

Mungall, E.C. 1978a. The Indian Blackbuck, Antelope: a Texas view. Kleberg studies in Natural Resources, College Station, TX, NO.3, 184 pp.

Prasad, N.L.N.S and Ramana Rao, J.V. 1984. Evaluation in habitat structure of blackbuck (*Antelope cervicapra*) in Andhra Pradesh with special reference to behaviour. *Geobios*, 11(1) : 17-21.

Prasad, N.L.N.S and Ramana Rao, J.V. 1985. Blackbuck conservation in cultivated areas of Andhra Pradesh. BNHS Centenary Seminar Proceeding: 401-406.

Prasad, N.L.N.S. 1983. Home range size of blackbuck, *Antelope cervicapra*, at Mudmal *Zeitschriftt Saujetierk*, 48(2) : 109-117.

Prasad, N.L.N.S. 1985. Activity time budget in blackbuck. *Proc. Indian Acad. Sci. (Animal Sci.)*, 94(1) : 57-65.

Prasad, N.L.N.S. 1985. Home range, dispersal and movement of Blackbuck, *Antelope cervicapra* Linn population in relation to seasonal change in Mudmal environs. Ph. D thesis, Osmania University Hyderabad.

Prasad, N.L.N.S. 1986a. Seasonal changes in the herd structure of blackbuck. *J. Bomb. Nat. Hist. Soc.*, 80(3) : 549-554.

Prasad, N.L.N.S. 1986b. Territoriality in Indian Blackbuck, *Antelope cervicapra* (Linnaeus). *J. Bomb. Nat. Hist. Soc.*, 86 : 187-193.

Prater, S.H. 1973. The book of Indian Animals. Bombay Natural History Society, Oxford University Press, Bombay, 3rd ed. pp. 270-271.

Ranjitshingh, M.K. 1982. Territorial behaviour of Indian blackbuck (*Antelope cervicapra* Linn. 1758) in the Veleveda National Park, Gujarat. *Bomb. Nat. Hist. Soc.*, 79(2) : 241-246.

Ranjitsingh, M.K. 1981. A note on the longevity of the blackbuck. *J. Bomb. Nat. Hist. Soc.*, 80(3) : 632-634.

Schaller, G.B., 1967. The deer and tiger. Chicago University Press.

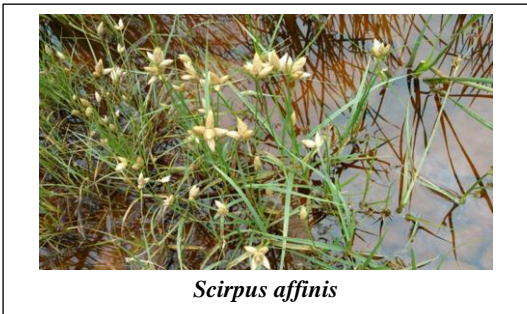
Schaller, G.B. 1964. On the behaviour of Blue sheep (*Pseudois nayaur*). *J. Bomb. Nat. Hist. Soc.*, 69 : 523-537.

Spillett, J.J. 1966. The blackbuck of Sikandra, U.P. *J. Bomb. Nat. Hist. Soc.*, 63(3): 633-663.

Flora and fauna -

Name of the plant	Marathi name	Families
<i>Acacia arabica</i>	Babhul	Mimosaceae
<i>Acacia leucophloea</i>	Hivar	Mimosaceae
<i>Dalbergia latifolia</i>	Phansi	Fabaceae
<i>Dalbergia sisoo</i>	sisoo	Fabaceae
<i>Santalum album</i>	Chandan	Santalaceae
<i>Ziziphus mauritiana</i>	Bor	Rhamnaceae
<i>Carissa conjesta</i>	Karvanda	Apocynaceae
<i>Azadirachta indica</i> L.	Kadunimb	Meliaceae
<i>Fimbristylis miliacea</i>		
<i>Celosia argentea</i>		
<i>Balanites roxburghii</i> (Planch) Kuntze	Hingot	Zygophyllaceae
<i>Hardwickia bipinnata</i> Roxb.	Kammara	Caesalpinaceae
<i>Striga desiflora</i> (Benth)	Agya	Orobanchaceae
<i>Eriocaulon</i> sp		
<i>Celosia argentea</i> L.	Kombda	Amarathaceae
<i>Tridax procumbens</i> L.	Maka	Asteraceae

<i>Ageratum conigoides, L.</i>	Ghanera, osaadi	Asteraceae
<i>Kylinga triceps Rottb.</i>	Nirvishi	Cyperaceae
<i>Vernonia cinerea L.</i>	Sahadevi	Asteraceae
<i>Paspalum scrobiculatum L.</i>	Harik	Poaceae
<i>Commelina benghalensis L.</i>	Kena	Commelinaceae
Plants growing at water resource areas		
<i>Cynodon dactylon</i>	Harli	
<i>Cyperus rotundus</i>	Nagarmotha	Cyperaceae
<i>Scirpus affinis</i>	-	Cyperaceae
<i>Typha angustifolia L.</i>	Pankanis	Typhaceae
<i>Cynodon plectostachys,</i>		Poaceae
Fauna-		
<i>Antilope cervicapra L.</i>	Kalvit	Bovidae
<i>Gazelia bennetti</i>	Chinkara	Bovidae
<i>Ploceus philippinus L.</i>	sugaran	Ploceidae
<i>Dicrurus macroceru (Vieillot)</i>	Kotwal	Dicruridae
<i>Pycnonotus café L.</i>	Red vented bulbul	Pycnonotidae



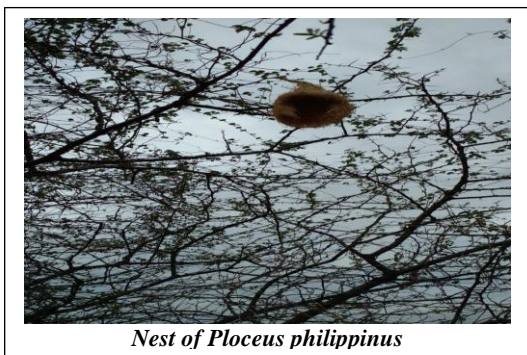
Scirpus affinis



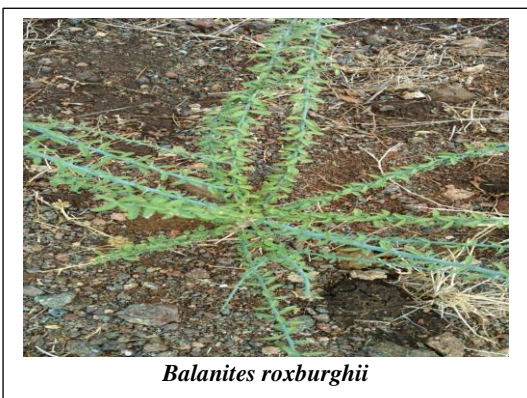
Solanum xanthocarpum



Hardwickia bipinnata



Nest of Ploceus philippinus



Balanites roxburghii



Path in the sanctuary



Antilope cervicapra L. (Blackbuck) Male and female



Diplopoda sp



Beetles



Typha angustifolia



Azadirachta indica L. fruits